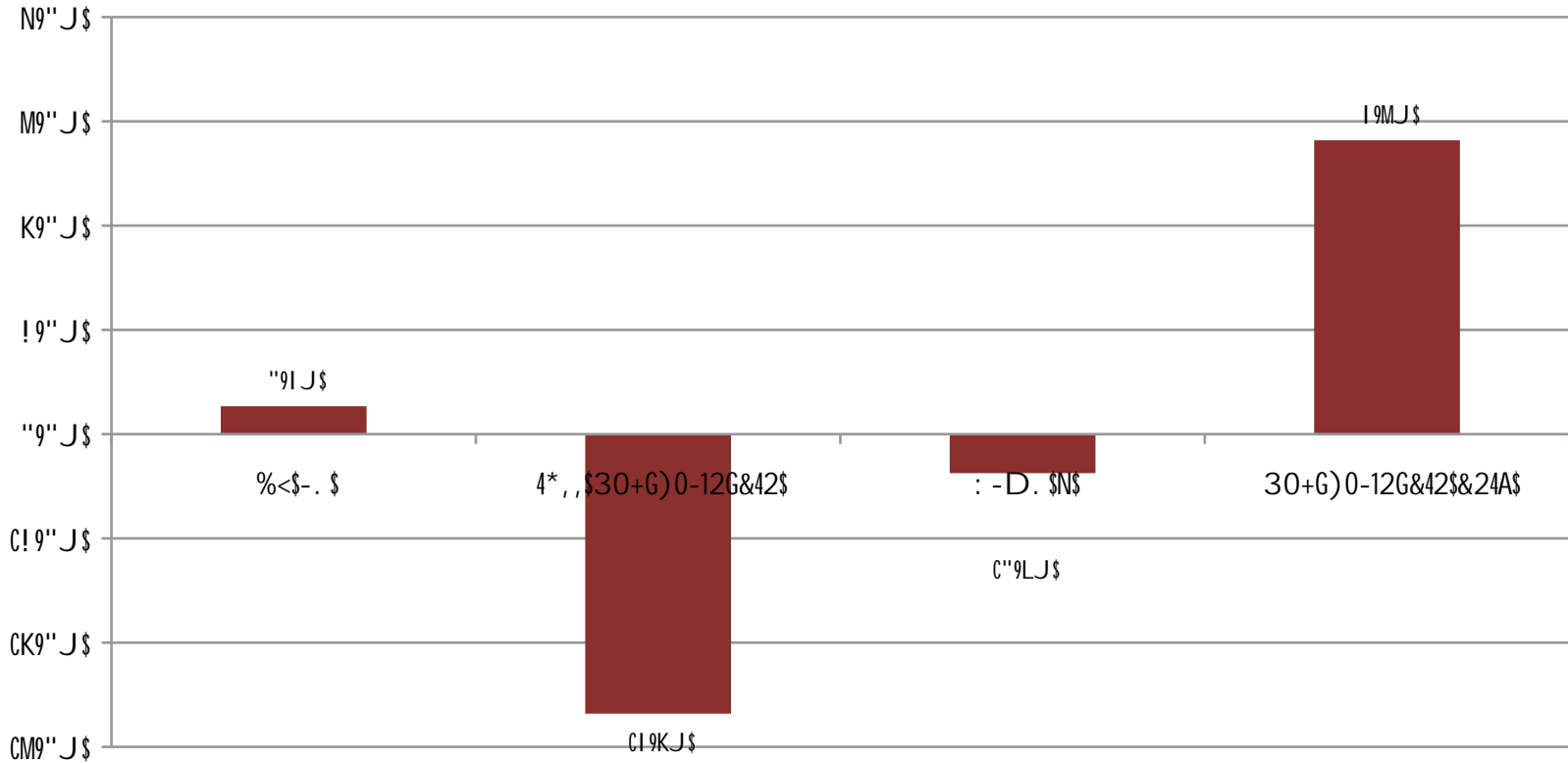


P*'G*2(+Q*\$R)+2Q*\$12\$%&'() *+, (\$-&01,1+2+\$P&S04+T&2U\$! """"C! ""#\$



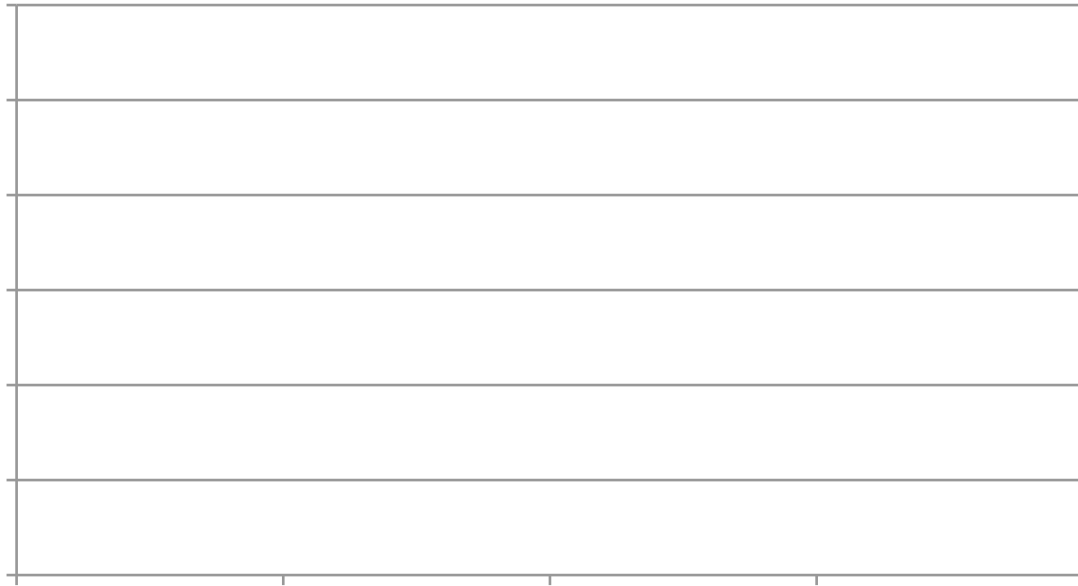
! ""#! \$%&'() *+, (\$-. \$/0,12*,, \$30(4&&5\$60 7 71(\$\$

8'9\$: &; *' (\$<1, *2, (+=(>\$?21@*' ,1(A\$&B\$-. C\$D&2' &*\$

8'9\$E&) 2\$F'+2G1,>\$-. \$H*G)\$?21@*' ,1(A\$

H) *\$ / 36\$S' * , *2(+T&2, \$V144\$; *\$&2C412 *\$+(\$G; +90479* =00G; *'\$





H) *\$R) +2Q*\$12\$: *+4\$-&01,1+2+\$_6PU\$P'1@+(*\$S40,\$
 PO; 41G\$6 *G(&'\$

State	2006-2008		2008-2010	
	Rank	% change	Rank	% change
North Dakota	1	13.3%	3	9.2%
South Dakota	2	11.0%	9	2.8%
Wyoming	3	9.6%	2	9.5%
Oregon	4	7.5%	44	-1.7%
Washington	5	6.3%	35	-0.8%
Louisiana	50	-5.2%	5	6.8%



H) *\$R) +2Q*\$12\$: *+4\$-&01,1+2+\$_6P\$G&2T20*=U\$P'1@+(*\$S40,\$
 PO; 41G\$6 *G(&'\$\$

State	2006-2008		2008-2010	
	Rank	% change	Rank	% change
Louisiana	50	-5.2%	5	6.8%
Arkansas	36	0.6%	21	0.8%
Mississippi	6	6.3%	38	-1.4%
Texas	10	5.2%	8	3.3%



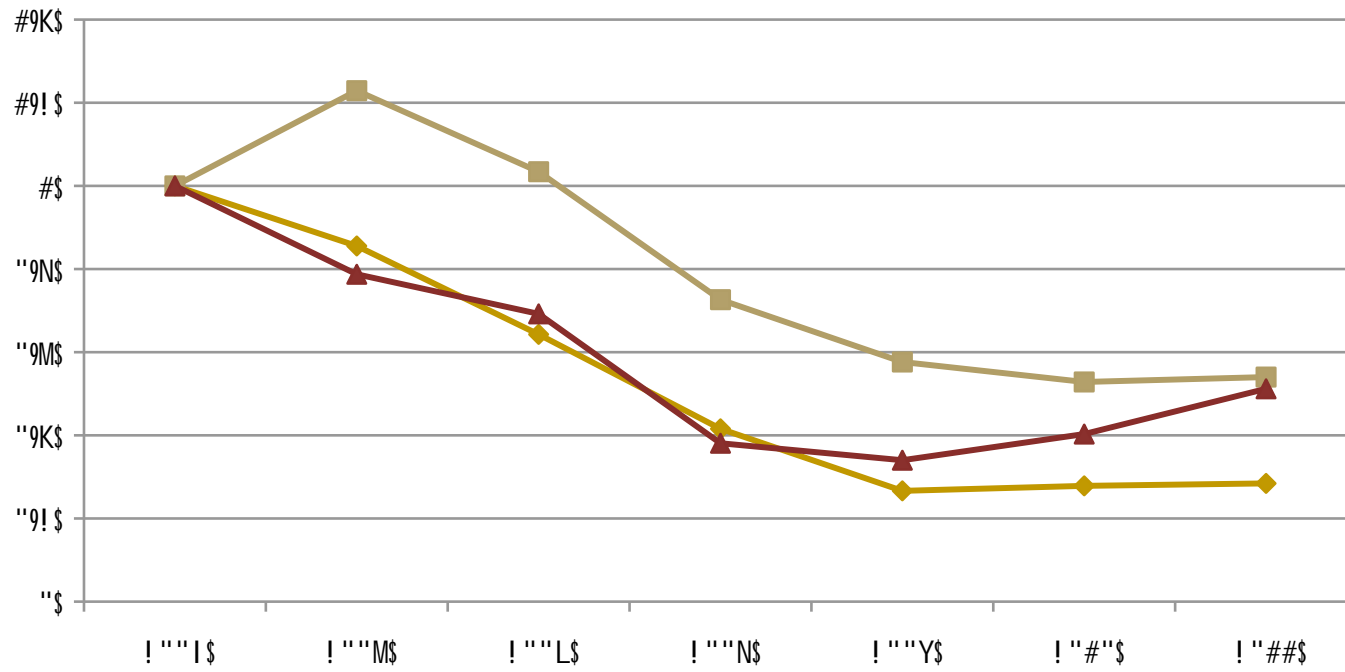
State	2006-2008		2008-2010	
	Rank	% change	Rank	% change
Louisiana	50	-5.2%	5	7.3%
Arkansas	31	0.6%	21	0.5%
Mississippi	8			

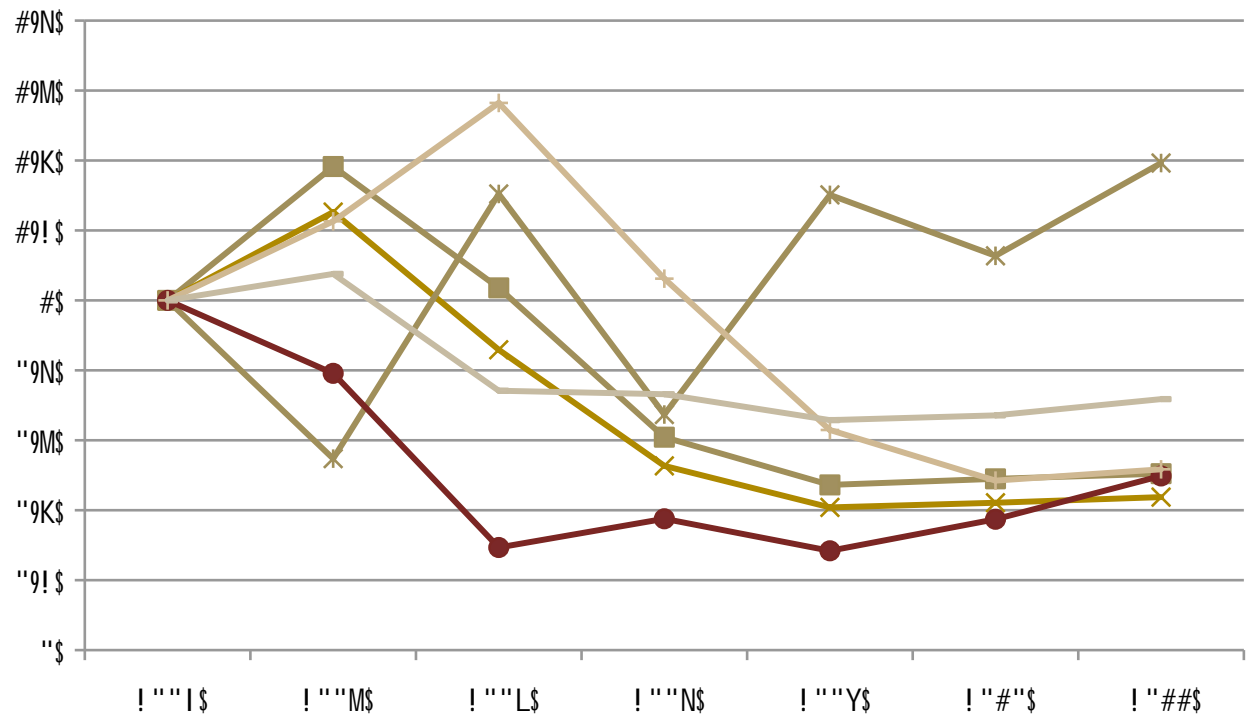






: *,1=*2T+4\$?21(, \$Z2=* [\$





. 2=\$() *\$4&V* , (\$' +25120\$D6. , US\$

% Change Median Selling Price: 2010-2011			
Rank	MSA	% change	2011 Median Price
145	Salem, OR	-15.7%	\$146,200
146	Gulfport-Biloxi,64WB		



J\$R) +2Q*\$12\$D* =1+2\$^ & 7 *\$P'1G* , U\$- &01, 1+2+\$D6. e, U\$

	2009	2010	2011	%chg 2008-11
Baton Rouge	\$163,000	\$169,600	\$163,400	0.25%
New Orleans	\$160,100	\$159,700	\$153,400	-4.18%
Northeast Louisiana	\$135,000	\$135,950	\$140,100	3.78%
Shreveport	\$147,000	\$156,600	\$156,200	6.26%
United States	\$172,100	\$173,100	\$166,200	-3.43%

6&O'G*U\$%+T&2+4\$. , ,&G1+T&2\$&B\$: *+4(&', \$



$$D^* = 1 + 2\% \times 4120 \times P'1G^*, \$\$$$

	Home Price less than \$200,000			
	2008	2009	2010	2011
Close price	\$115,000	\$118,000	\$114,500	\$120,000
Price per Sq Foot	\$71.05	\$73.49	\$72.11	\$72.17

	Home Price Greater Than or Equal to \$200,000			
	2008	2009	2010	2011
Close price	\$252,000	\$249,900	\$252,000	\$260,000
Price per Sq Foot	\$106.41	\$106.33	\$107.51	\$106.65

	All Existing Homes			
	2008	2009	2010	2011
Close price	\$128,850	\$135,000	\$135,950	\$140,100
Price per Sq Foot	\$77.12	\$80.81	\$79.73	\$80.25

6&O'G*U\$\$%<\$- . \$/&+'=\$&B\$: *+4(&', \$D-6\$

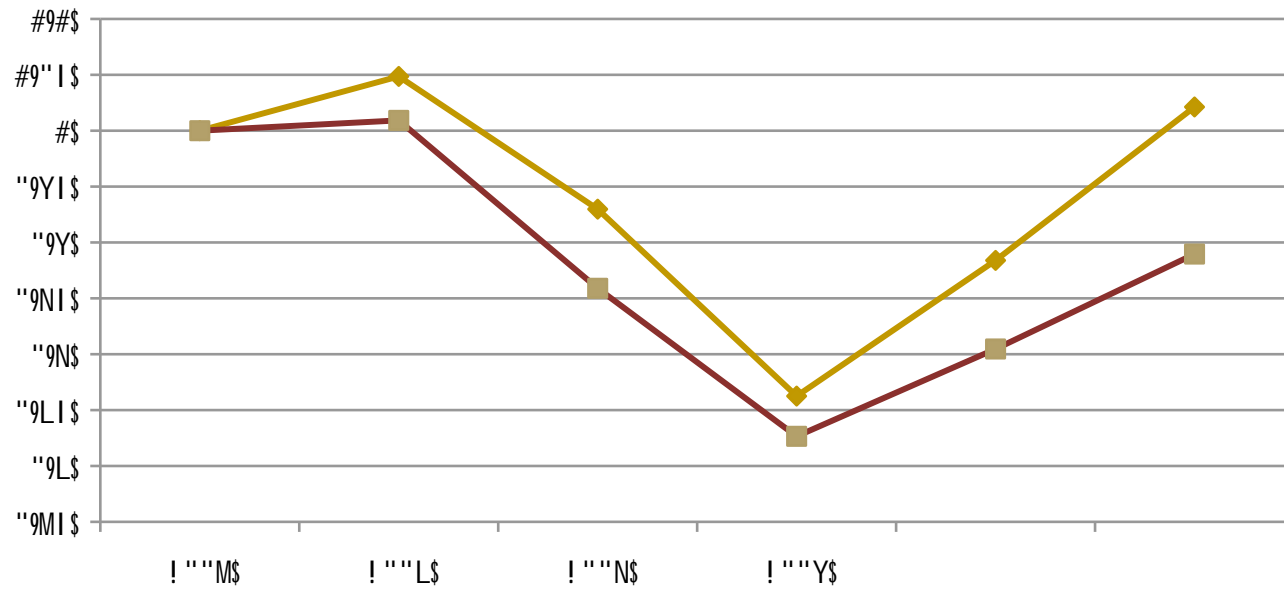




- F *, (*' 2\$81, ('1G(\$! ""#\$X##>KI I \$\\! ""#C##U\$SCN9MJ]\$
- -&01, 1+2+\$! ""#\$X\$#N>""M\$\\! ""#C##U\$CM9KJ]\$
-

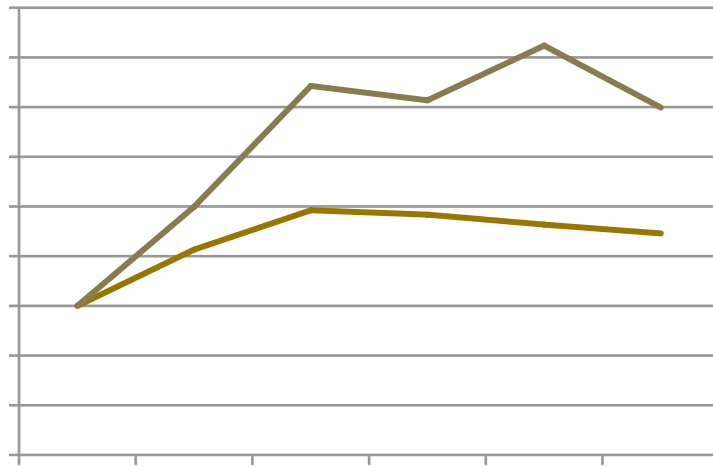


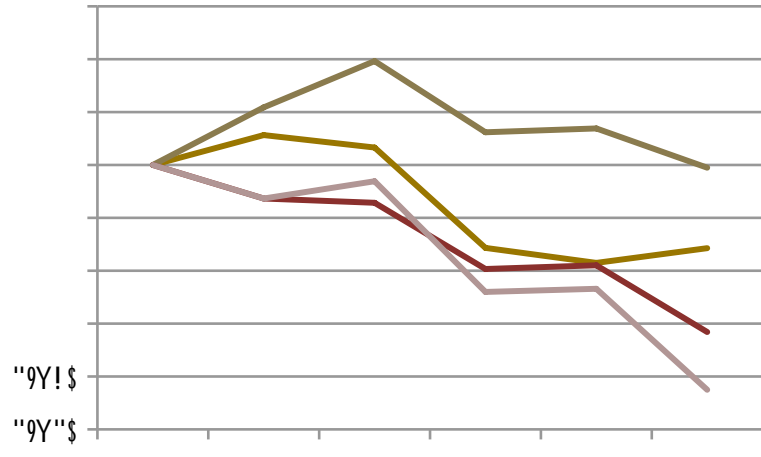




H) *\$%&' () *+, (\$-&01,1+2+\$-+; &'\$D+'5*(\$







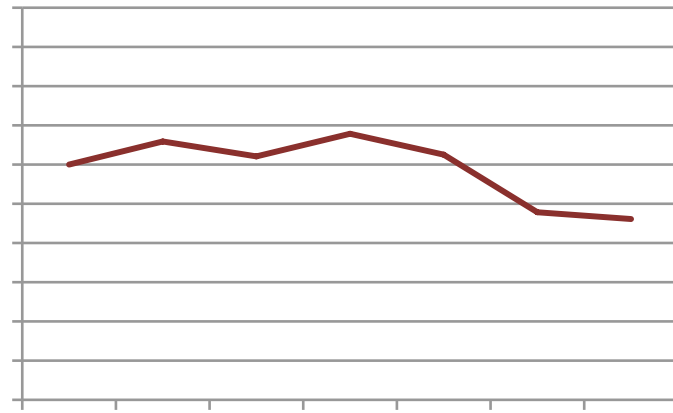






[Red header bar]		
[Red header bar]	[Red header bar]	[Red header bar]
[Red header bar]	[White cell]	[White cell]





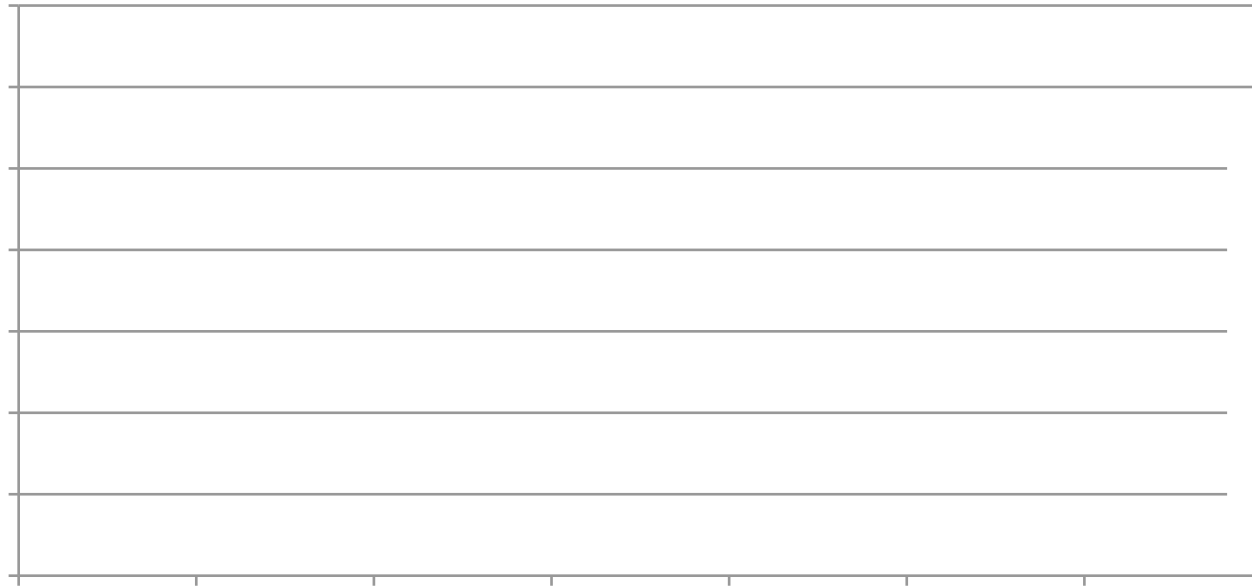






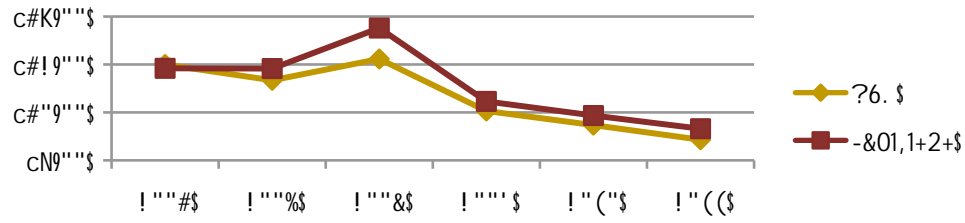
E&; \$R' * +T&20E&; \$8* , ('OGT&2h9\$



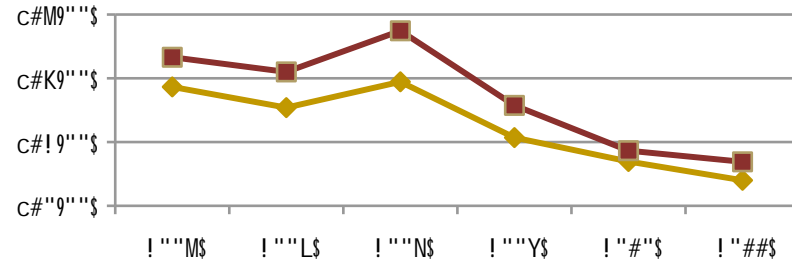




R&77*'G1+4\$R&2,07ST&2\$

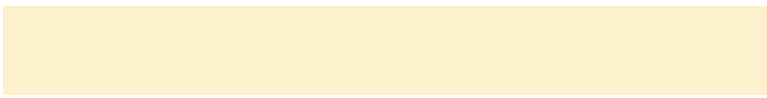


: *,1=*2T+4\$R&2,07ST&2\$



R*2(0'A\$-125\$+2=\$_'&V()\$12\$%&'() *+, (\$-&01,1+2+\$





R*2(O'A-125\$<[S+2,1&2U\$\$\$
 %&'() *+,(\$-&01,1+2+\$<7S4&A7*2(\$<j *G(,a\$

			H&(+4\$; &() \$ * @* 2(, \$
R*2(O'A-125\$! ""Y\$<[S+2,1&2\$! "##\$<[S+2,1&2\$	
81' *G(\$q&; , \$	WI ''\$	LYM\$	##KM\$
Z2=1' *G(\$q&; , \$	#Y! \$	KWN\$	MW''\$
Z2=OG*=\$q&; , \$	#YY\$	KI! \$	MI # \$
H&(+4\$q&; , \$	LK#\$		



H)+25\$A&0\$B&'\$60SS&'T2Q\$()*\$H*G)0?-D\$\$
/0,12*,,30(4&&5\$60771(9\$\$\$

. /0\$

